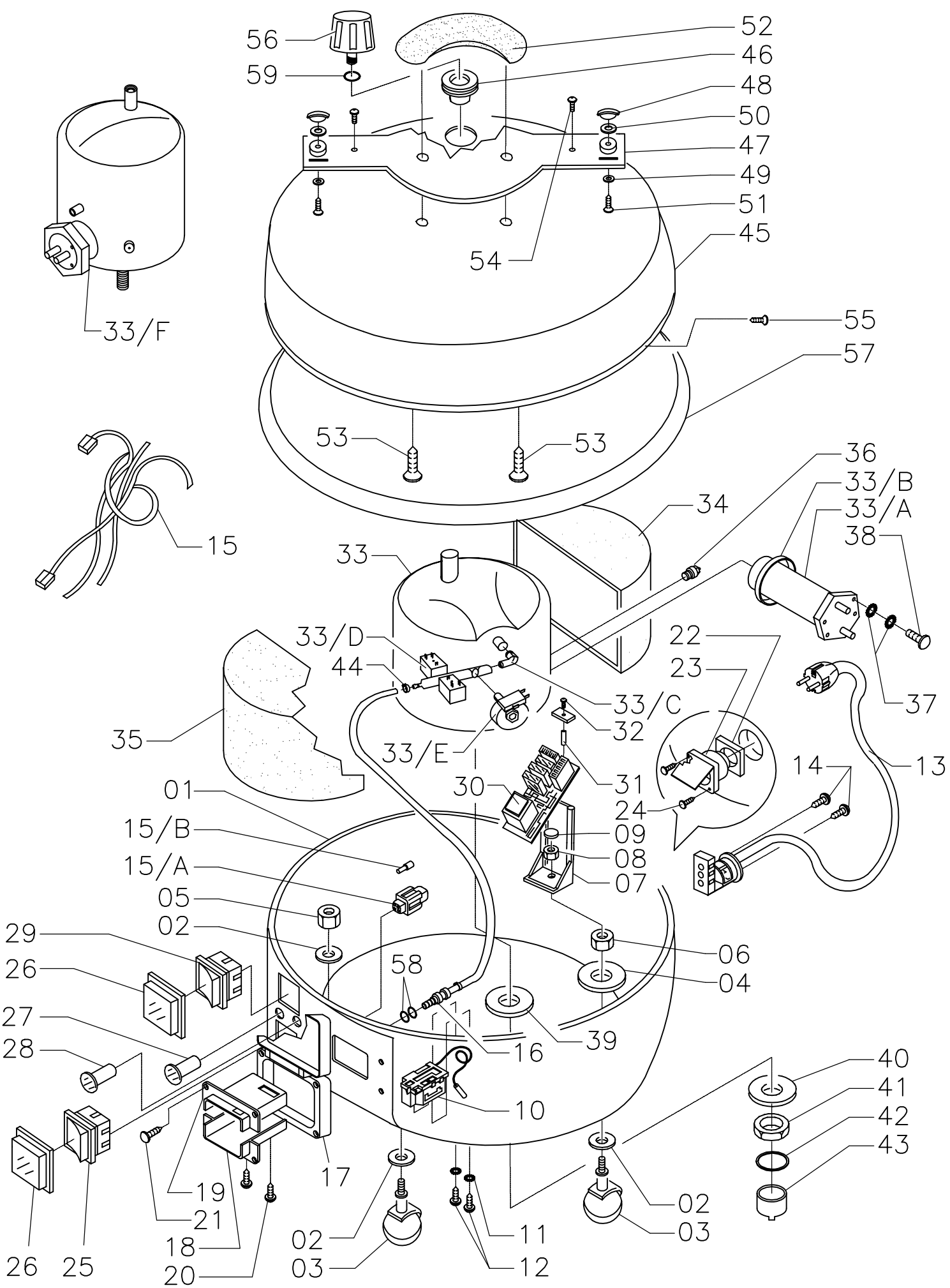


Pos.	Codice	Q.tà	Denominazione	Denomination	Description	Benennung	Descripcion
<i>T. AIDA BABY 2000W 230V BT D (cod. 107500)</i>							
01	CA1172	01	SOTTOBASE BABY	CHASSIS BABY	BASE	BASE	BASE
02	VI7329	06	RONDELLA 8X17	WASHER 8X17	RONDELLE	SCHEIBE	ARANDELA
03	PG5410	05	RUOTA Ø 40 M8X15	WHEEL Ø 40 M8X15	ROUE	RAD	RUEDA
04	VI7305	04	RONDELLA 8X24	WASHER 8X24	RONDELLE	SCHEIBE	ARANDELA
05	VI7145	04	DADO M.8 AUTOBLOCCANTE	NUT	ECROU	MUTTER	TUERCA
06	VI7342	01	CONTRODADO M8	NUT M8	ÉCROU M8	MUTTER M8	TUERCA M8
07	PG5034	01	STAFFA PORTASCHEDA	SUPPORT MOUNT EL.BOARD	BRIDE SUPPORT PLAQUE EL	HALTERUNG DER PLATINE	SOPORTE PARA PLACA EL.
08	VI7342	01	CONTRODADO M8	NUT M8	ÉCROU M8	MUTTER M8	TUERCA M8
09	IS4030	01	ISOLANTE Ø25x5 GOMMASP.	INSULATION Ø25X5	ISOLANT Ø25X5 EPONGE	ISOLATION Ø25X5 GUMMI	ISOLANTE Ø25X5 GOMA
10	PE2301	01	TERMOSTATO 195°C BULBO	CONTROL THERM. 195°C	THERMOSTAT 195°C	THERMOSTAT 195°C	TERMOSTATO 195°C
11	VI7318	02	RONDELLA DENTELLATA Ø4	WASHER Ø4	RONDELLE Ø4	SCHEIBE Ø4	ARANDELA Ø4
12	VI7121	02	VITE M4x5 TCILT.TC (term.)	SCREW ZN M4X5	VIS	SCHRAUBE	TORNILLO
13	PE2170	01	CAVO 3X1,5 SCHUKO	SUPPLY WIRING + SCHUKO	CABLÂGE AL. + SCHUKO	KABEL + SCHUKO	CABLAJE + SCHUKO
14	VI7103	02	VITE 3,5X6,5	SCREW ZN M3,5X6,5	VIS	SCHRAUBE	TORNILLO
15	PE2131	01	CABLAGGIO AIDA BABY	COMP. WIRING AIDA BABY	CABLAGE AIDA BABY	KABEL DER AIDA BABY	CABLAJE AIDA BABY
15/A	PE2177	01	FRUTTO PRESA CDF07	PLUG BODY 7P+T	CORPS DE PRISE 7P+T	STECKER 7P+ERDE	CUERPO DE TOMA 7P+T
15/B	PE2012	07	CONTATTO FEMMINA 10A	CONTACT 10A	CONTACT FÉMININ 10A	KONTAKT 10A	CONTACTO HEMBRA 10A
16	PG7002	01	UGELLO M+TUBO CALZ 5x10	NOZZLE	BUSE	DÜSE	BOQUILLA
17	PP0008	01	SPORTELLO COPRI PRESA	PLUG PROTECTION	COUVERCLE PROTECTEUR	SCHUTZKAPPE	TAPON PROTECTOR
18	120102	01	CORPO PRESA INF.	BOTTOM SOCKET COVER	CORPS DE PRISE INF.	STECKER UNTERER TEIL	CUERPO DE TOMA INF.
19	120101	01	CORPO PRESA SUP.	TOP SOCKET COVER	CORPS DE PRISE SUP.	STECKER OBERER TEIL	CUERPO DE TOMA SUP.
20	VI7105	02	VITE 3,9X16	SCREW ZN 3,9X16	VIS	SCHRAUBE	TORNILLO
21	VI7341	04	VITE AUTOF. Z NERA 3.9x19	SCREW ZN 3,9X19	VIS	SCHRAUBE	TORNILLO
22	PG5070	01	SPESSORE PER PRESA	INSULATION FOR SOCKET	ISOLANT POUR PRISE	ISOLATION FÜR STECKDOSE	ISOLANTE PARA ENCHUFE
23	PE2133	01	PRESA 10-16A 250V	ELECTRIC SOCKET	PRISE	STECKDOSE	ENCHUFE
24	VI7105	04	VITE 3,9X16	SCREW ZN 3,9X16	VIS	SCHRAUBE	TORNILLO
25	PE227C	01	INTERRUTTORE 16A	POWER SWITCH	INTERRUPTEUR	SCHALTER	INTERRUPTOR
26	PG5021	02	CAPPUCCIO PROTEZIONE	RUBBER SWITCH COVER	COUVERCLE CAOUTCHOUC	GUMMI SCHUTZKAPPE	TAPA DE GOMA
27	PE22S4	01	SPIA LUM. VERDE	GREEN INDICATOR LIGHT	TÉMOIN LUMINEUX VERT	GRÜNES KONTROLLICHT	ESPÍA LUMINOSA VERDE
28	PE22S3	01	SPIA LUM. ROSSA	RED INDICATOR LIGHT	TÉMOIN LUMINEUX ROUGE	ROTES KONTROLLICHT	ESPÍA LUMINOSA ROJA
29	PE227R	01	INTERRUTTORE 16A	POWER SWITCH	INTERRUPTEUR	SCHALTER	INTERRUPTOR
30	PE2339	01	SCHEDA TVAP 05	ELECTR. BOARD TVAP05	CARTE ÉLECTRONIQUE	ELEKTR. PLATINE	PLACA ELÉCTRICA
31	RA3209	0.012	DISTANZIATORE M3 Ø6	SPACER	ENTRETOISE	ABSTANDSSTÜCK	SEPARADOR
32	VI7142	01	VITE 2,9X32	SCREW ZN 2,9X32	VIS	SCHRAUBE	TORNILLO
33	090304	01	CALDAIA L.3 BABY 2000W	BOILER COMP. BABY	CHAUDIÈRE BABY	DAMPFKESSEL BABY	CALDERA BABY
33/A	PE2511	01	RESISTENZA 230V 2000W	HEATING ELEM. 230V 2000W	RÉSISTANCE	WIDERSTAND	RESISTENCIA
33/B	PG5103	01	GUARNIZIONE AL. 33X40X1,5	HEATING ELEM. GASKET AL.	JOINT ALUMINIUM	ALUMINIUMDICHTUNG	JUNTA EN ALUMINIO
33/C	RA3147	01	RACCORDO 90° 1/8F 1/8M	ELBOW VALVE	RACCORD COUDE	WINKELANSCHLUß	RACORDO "L"
33/D	PE2342	01	ELETTROVALVOLA	SOLENOID VALVE	SOUPAPE ÉLECTRIQUE	ELEKTROVENTIL	ELECTROVÁLVULA
33/E	PE2401	01	PRESSOSTATO	PRESSURE SWITCH	PRESSOSTAT	DRUCKWÄCHTER	MADITOR DE PRESIÓN
33/F	990033	01	CALDAIA C/RES 200W 230V	BOILER	CHAUDIÈRE	DAMPFKESSEL	CALDERA
34	IS4013	01	PROTEZIONE CALD. SX	LEFT BOILER PROTECTION	PROTECTION CHAUDIÈRE G.	LINKER KESSELSCHUTZ	PROTECCIÓN CALDERA IZQ.
35	IS4014	01	PROTEZIONE CALD. DX	RIGHT BOILER PROTECTION	PROTECTION CHAUDIÈRE D.	RECHTER KESSELSCHUTZ	PROTECCIÓN CALDERA DE.
36	PE2303	01	TERMOSTATO R.M.	RESET THERMOSTAT	THERMOSTAT "RESET"	"RESET"-THERMOSTAT	TERMOSTATO "RESET"

37	VI7318	02	RONDELLA Ø 4	WASHER Ø4	RONDELLE	SCHEIBE	ARANDELA
38	VI7152	01	VITE 3,9X9,5	SCREW ZN 3,9X9,5	VIS	SCHRAUBE	TORNILLO
39	VI7309	01	RONDELLA GREMB. ZN	WASHER 12x36	RONDELLE	SCHEIBE	ARANDELA
40	VI7333	02	RONDELLA Ø 12X36 INOX	WASHER 12X36 INOX	RONDELLE	SCHEIBE	ARANDELA
41	VI7218	01	DADO M12X1,25	NUT	ECROU	MUTTER	TUERCA
42	PG5133	01	GUARNIZIONE 11X2	GASKET	JOINT	DICHTUNG	JUNTA
43	RA3315	01	TAPPO DRENAGGIO	BOILER DRAIN CAP	BOUCHON DE DRAINAGE	ABLAßDECKEL	TAPÓN DE DRENAJE
44	PG5209	01	FASCETTA STRIK 9,5-11	SINGLE EAR CLAMP 9,5-11	COLLIER	SHELLE	ABRAZADERA
45	CA1171	01	BASE SUPERIORE BABY	BASE BABY	BASE SUP. BABY	BABY OBERE BASE	BASE SUP. BABY
46	PG5304	01	PASSATUBO TAPPO	FAIRLEAD	PASSAGE	DURCHGANG	PASO
47	RA3405	01	STAFFA AG. ASPIRATORE	BRACKET	BRIDE	HALTERUNG	ABRAZADERA
48	CR0005	02	PERNO AG. CARRELLO BABY	PIN	GOUJON D'ARRET	SPERRBOLZEN	PERNO
49	VI7314	02	RONDELLA Ø 4X12	WASHER Ø 12	RONDELLE	SCHEIBE	ARANDELA
50	VI7339	02	RONDELLA Ø 10X16X0,5	WASHER Ø 10X16X0,5	RONDELLE	SCHEIBE	ARANDELA
51	VI7105	02	VITE 3,9X16	SCREW ZN 3,9X16	VIS	SCHRAUBE	TORNILLO
52	010105	01	MANIGLIA NERA	BLACK HANDLE	POIGNÉE NOIRE	SCHWARZER HANDGRIFF	MANGO NEGRO
53	VI7195	02	VITE 6,3X19	SCREW ZN 6,3X19	VIS	SCHRAUBE	TORNILLO
54	VI7114	02	VITE 2,9x9,5	SCREW 2,9x9,5	VIS	SCHRAUBE	TORNILLO
55	VI7130	03	VITE KF NICH. 3,5X9,5	SCREW	VIS	SCHRAUBE	TORNILLO
56	RA3319	01	TAPPO 3/8" M 5.5Bar ANTISV.	PLUG	CAPUCHON	VERSCHLUSSDECKEL	TAPÓN
57	PG5325	01	PARABORDO IN GOMMA L.96	BUMPER	PARE-CHOCS	STOSSDÄMPFER	PARACHOQUES
58	PG5106	02	OR 9.25X1.78 NBR NERO	GASKET	JOINT	DICHTUNG	GUARNICIÓN
59	PG5107	01	OR 13.94X2.62 NBR NERO	GASKET	JOINT	DICHTUNG	GUARNICIÓN
60	PG5131	02	OR 5.28X1.78 NBR NERO	GASKET	JOINT	DICHTUNG	GUARNICIÓN

T. AIDA BABY 2000W 230V BT D (107500) U.T. 25/07/2001  
Rev.2 10/06/2004

 I particolari evidenziati sono validi solo come parti sostitutive, da non considerarsi nella fase di montaggio.



T.AIDA BABY 2000W 230V BT D (cod. 107500)  
 U.T. REV.2 15/12/2003